

*If you've been dreaming of
your own log home. . .*

*then it's time to talk to
Contemporary Log Homes. . .*



Contemporary
LOG
HOMES, llc
We Deliver Dreams!

Contemporary Log Homes - Standard Plans

THE OLD PLANK - 2,861 sq. ft.



If you're interested in a floor plan that defines functional with no skimp on features then The Old Plank model is designed especially for you.

As you pass through the front door, the ample entry foyer provides access to the great room, kitchen, master bedroom and laundry. A log stairwell provides access to the 2nd floor loft bedroom areas and lower level.

You're greeted by an open, vaulted great room connected to a bay window dining area off the kitchen. The Old Plank's effective use of space maintains the feeling of warmth often lost in larger areas.



A breakfast counter separates the kitchen from the dining area. Log rafters supporting a tongue and groove ceiling in the kitchen and dining areas beckons friends, family and guests to share a meal or simply enjoy the company.



Standard Plans - Signature Series

The dining room, with two alcove bay windows, floods the area with natural light and offers great views of your surrounding landscape.

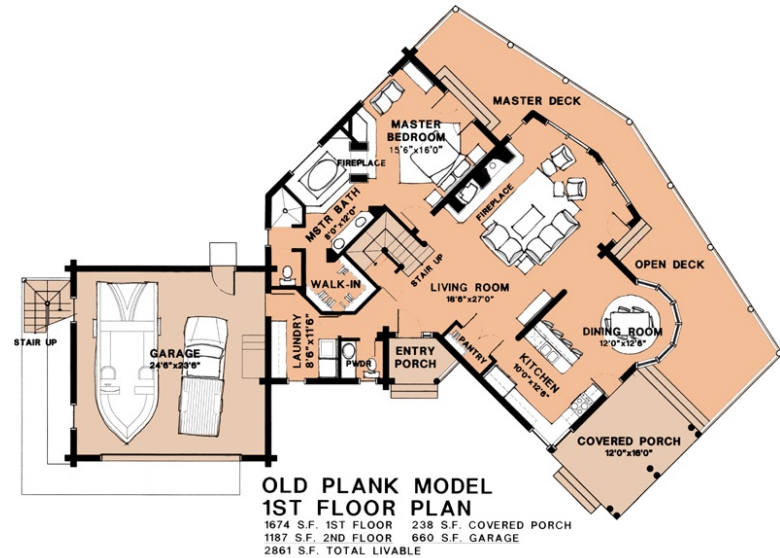
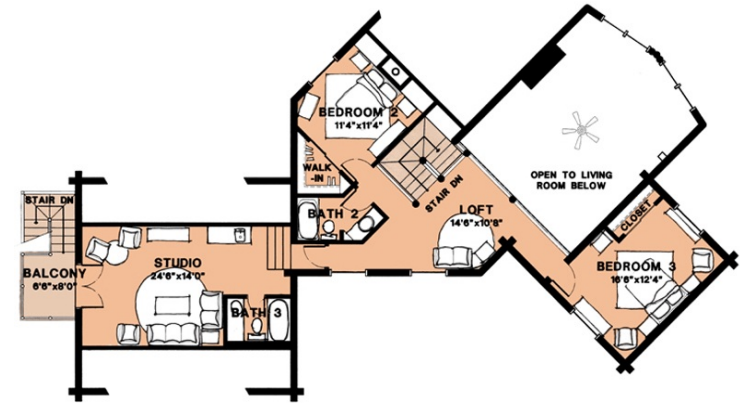
Off the kitchen and great room is a large covered porch. This porch is attached to a large wrap around deck with log railings. As is with many of our plans, the extensive use of decks and porches virtually eliminates the transition from indoor to outdoor living. Covered porches provide exterior seating areas with protection from the elements.



Up the log railed stairway from the foyer is a captains walk which overlooks the great room. This open area provides access to two bedrooms with log walls, bath and a large studio/office.

Efficient space utilization is evident in the 2nd floor studio which sits above the garage. With it's own outside entrance, the studio could easily double as a guest house or home office.

A little bit of everything in a well utilized floor plan, this home's unrelenting warmth and charm offers a lifetime of pleasure and enjoyment.



Contemporary Log Homes - *Believe!*

The Old Plank - 2,861 sq. ft.
Material Package Price: \$113,610.00

STANDARD MATERIAL PACKAGE INCLUDES:

SILL PLATE:	2x8 pressure treated or redwood plate.
FLOOR SYSTEM:	2x floor joists with 3/4" T&G OSB or plywood sheathing & girder beams.
PORCH FLOORS:	2x floor joists with 2x6 decking.
LOG WALLS:	7" dia. Swedish cope, lodge pole pine and douglas fir mix.
INTERIOR PARTITIONS:	2x4 or 2x6 studs @ 24" o.c.
STAIRS:	2x12 stringers and treads.
LOG GUARDRAILS:	2" dia. pickets @ 5" o.c. with 4" dia. rail on stairways & 2nd floor balconies
ROOF SYSTEM:	2x roof rafters with 1/2" OSB roof sheathing (or 5/8" OSB where required by code).
PORCH ROOF SYSTEM:	2x roof rafters with 1/2" OSB roof sheathing (or 5/8" OSB where required by code).
FASCIA:	2x S1S2E spruce or pine with 1x4 shingle molding.
ROOFING:	30 yr. Architectural fiberglass shingles over 15 lb. roofing felt.
BASIC BUILDING HARDWARE:	Joist hangers, hurricane ties, roof straps, log wall bolts & construction adhesive between each course of logs.
CONSTRUCTION MANUAL:	A simple step by step "how-to" guide.
BLUEPRINTS:	Five complete sets of permit ready plans prepared by registered architects.

LOG FINISH MATERIALS:

"Sashco" products: Log Jam chinking for interior & exterior joints/seams.
Capture exterior stain and Cascade exterior clear coat. Symphony (2 coats) interior clear coat finish.

TECHNICAL ASSISTANCE:

A Contemporary Log Home representative will assist the construction crew at the construction site in starting log walls from the first floor.

FREIGHT:

Included to the construction site if the materials are paid for prior to shipping in the AZ, CO, UT areas. Additional freight costs will apply for all other areas.

MANY POPULAR OPTIONS ARE AVAILABLE:

6x8 D-shaped logs	Pre-fitted Natural Hand Hewn Logs
8", 9", 10" & 12" diameter logs	Hand Peeled Machine Logs
Metal Roofing	Log Stairs
Window Packages	Door Packages
Heavy Timber Structures	Custom Design by Registered Architects

Thanks for taking the time to consider us as part of your dream. Call one of our representatives today or anytime. We don't have a clock when it comes to customer service!



Western Region
4542 East McKellips Road
Suite 101
Mesa, AZ 85215
(480) 894-1715

Eastern Region
25950 Hayden Lane
Edinboro, PA 16412
(814) 734-8716

Visit us on the web at www.clhllc.com
Email: deliveredreams@clhllc.com