

*If you've been dreaming of
your own log home. . .*

*then it's time to talk to
Contemporary Log Homes. . .*



Contemporary
LOG
HOMES, llc
We Deliver Dreams!

THE BOULDER RIVER -- 2,090 sq. ft.



Contemporary Log Homes is pleased to introduce the Boulder River model to our Signature Series of floor plans.

This practical and open design provides the perfect balance between functional and luxurious log home living. This charming 3 bedroom home has it all.

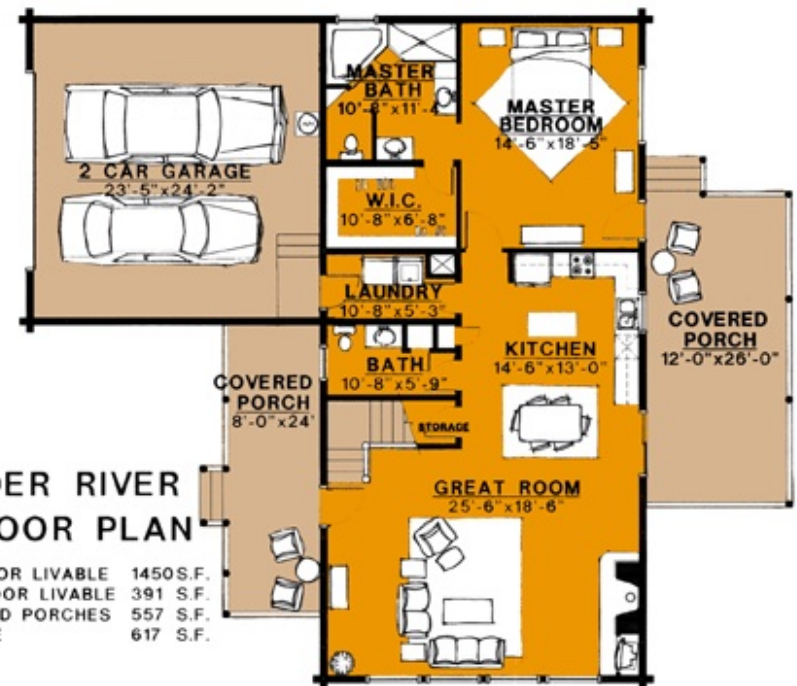


Covered porches in both front and rear allow protection from unwelcome elements and enjoyment of those perhaps more favorable. Kitchen and dining areas effortlessly blend into the vaulted great room providing the all-included feeling for family and guests. The laundry and utility areas on the first floor are strategically incorporated to make daily chores easier to tolerate.

The adjacent first floor master suite with generous walk-in closet and ensuite insures your evening retreat will be one of comfort and relaxation.

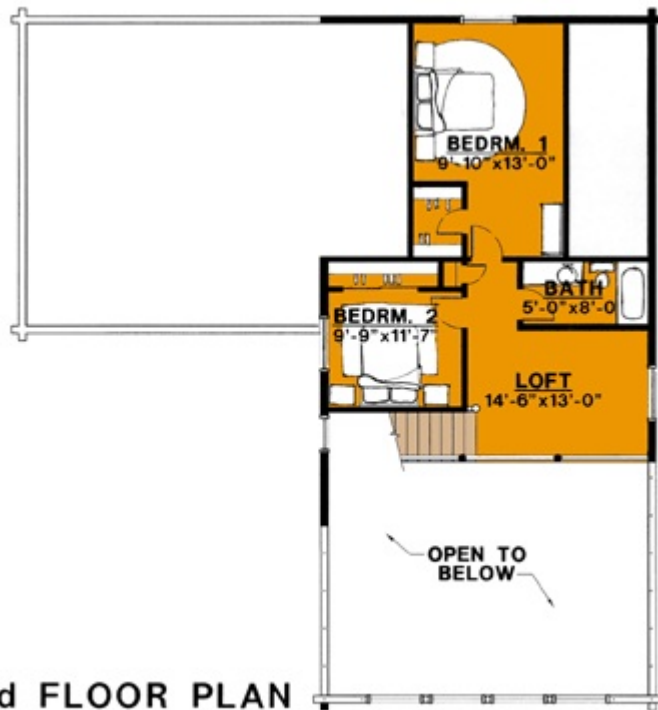
The open stairway to the loft and additional bedrooms on the 2nd floor complete this "has it all" plan.

The Aspen is our newest addition to our Signature Series and you'll find loads of character presented in an affordable floor plan. This home has all the features you'd expect in much larger counterparts.

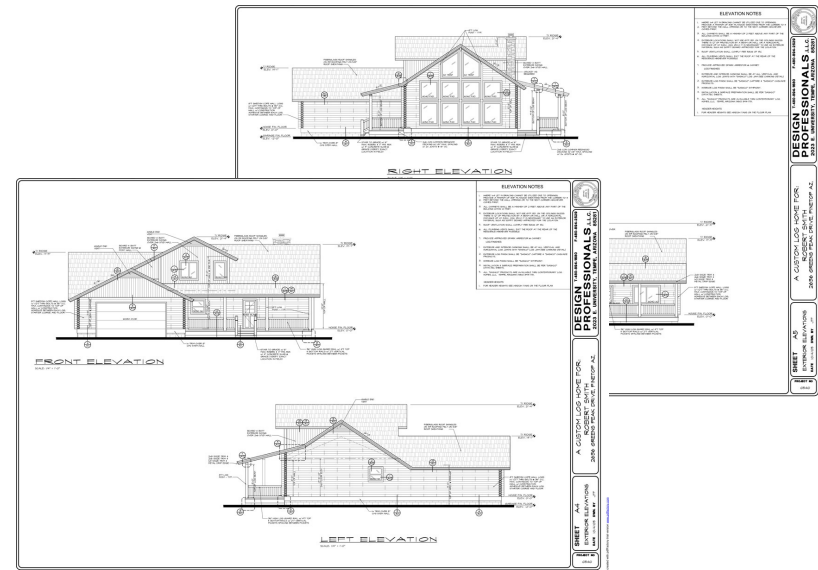


Comfort abounds with this extremely efficient and stylish plan which is enhanced by a dining area bay window, cozy great room and curved stairway to loft and additional bedrooms on the 2nd floor. Multiple porches surround the home providing outdoor portals to the surrounding landscape.

Architectural enhancements include the tension arches over porches and entries.



2nd FLOOR PLAN



The Boulder River - 2,090 sq. ft.
Material Package Price: \$93,450.00

STANDARD MATERIAL PACKAGE INCLUDES:

SILL PLATE:	2x8 pressure treated or redwood plate.
FLOOR SYSTEM:	2x floor joists with 3/4" T&G OSB or plywood sheathing & girder beams.
PORCH FLOORS:	2x floor joists with 2x6 decking.
LOG WALLS:	7" dia. Swedish cope, lodge pole pine and douglas fir mix.
INTERIOR PARTITIONS:	2x4 or 2x6 studs @ 24" o.c.
STAIRS:	2x12 stringers and treads.
LOG GUARDRAILS:	2" dia. pickets @ 5" o.c. with 4" dia. rail on stairways & 2nd floor balconies
ROOF SYSTEM:	2x roof rafters with 1/2" OSB roof sheathing (or 5/8" OSB where required by code).
PORCH ROOF SYSTEM:	2x roof rafters with 1/2" OSB roof sheathing (or 5/8" OSB where required by code).
FASCIA:	2x S1S2E spruce or pine with 1x4 shingle molding.
ROOFING:	30 yr. Architectural fiberglass shingles over 15 lb. roofing felt.
BASIC BUILDING HARDWARE:	Joist hangers, hurricane ties, roof straps, log wall bolts & construction adhesive between each course of logs.
CONSTRUCTION MANUAL:	A simple step by step "how-to" guide.
BLUEPRINTS:	Five complete sets of permit ready plans prepared by registered architects.

LOG FINISH MATERIALS: "Sashco" products: Log Jam chinking for interior & exterior joints/seams. Capture exterior stain and Cascade exterior clear coat. Symphony (2 coats) interior clear coat finish.

TECHNICAL ASSISTANCE: A Contemporary Log Home representative will assist the construction crew at the construction site in starting log walls from the first floor.

FREIGHT: Included to the construction site if the materials are paid for prior to shipping in the AZ, CO, UT areas. Additional freight costs will apply for all other areas.

MANY POPULAR OPTIONS ARE AVAILABLE:

6x8 D-shaped logs	Pre-fitted Natural Hand Hewn Logs
8", 9", 10" & 12" diameter logs	Hand Peeled Machine Logs
Metal Roofing	Log Stairs
Window Packages	Door Packages
Heavy Timber Structures	Custom Design by Registered Architects

Thanks for taking the time to consider us as part of your dream. Call one of our representatives today or anytime. We don't have a clock when it comes to customer service!



Western Region
4542 East McKellips Road
Suite 101
Mesa, AZ 85215
(480) 894-1715

Eastern Region
25950 Hayden Lane
Edinboro, PA 16412
(814) 734-8716

Visit us on the web at www.clhllc.com
Email: deliverdreams@clhllc.com