

*If you've been dreaming of
your own log home. . .*

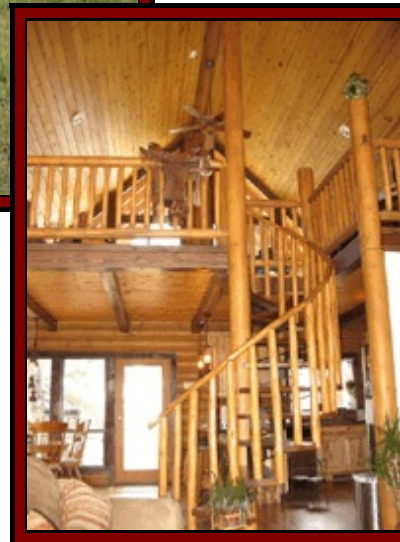
*then it's time to talk to
Contemporary Log Homes. . .*



Contemporary
LOG
HOMES, llc
We Deliver Dreams!

Contemporary Log Homes

THE HEARTHSIDE - 1,596 sq. ft.



While The Hearthside model is also available in a single level floor plan, the addition of an optional second level loft area allows for a majestic great room with vaulted ceiling.



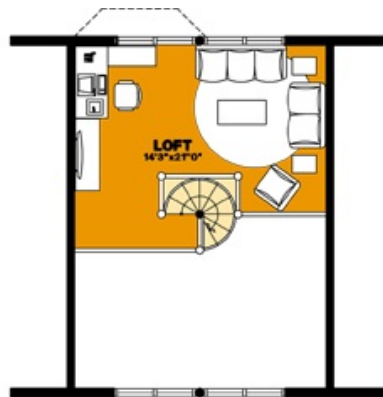
The Hearthside model served as one of our inaugural plans over 30 years ago, yet continues to be one of our more popular homes today. A testament to the timeless appeal of this design and the natural beauty of log home living.

Standard Plans Traditional Series

With 3 spacious bedrooms and a large living area, The Hearthside is a well-designed home. The total home has a truss roof system with a 5/12 pitch. The ceiling of the front porch, garage and bedroom area are flat, and the kitchen, dining and living rooms areas are scissor trusses.



With the interior walls being textured drywall, this model offers the contrasting look of a conventional home along with the rustic, warm look of logs.



2ND FLOOR PLAN
OPTIONAL LIVABLE 334 SQ.FT.



THE HEARTHSTONE MODEL
1ST FLOOR PLAN
TOTAL LIVABLE 1596 SQ.FT.
GARAGE 624 SQ.FT.
PORCHES 176 SQ.FT.

Contemporary Log Homes - *Believe!*

The Hearthside - 1,596 sq. ft.
Material Package Price: \$63,105.00

STANDARD MATERIAL PACKAGE INCLUDES:

SILL PLATE:	2x8 pressure treated or redwood plate.
FLOOR SYSTEM:	2x floor joists with 3/4" T&G OSB or plywood sheathing & girder beams.
PORCH FLOORS:	2x floor joists with 2x6 decking.
LOG WALLS:	7" dia. Swedish cope, lodge pole pine and douglas fir mix.
INTERIOR PARTITIONS:	2x4 or 2x6 studs @ 24" o.c.
STAIRS:	2x12 stringers and treads.
LOG GUARDRAILS:	2" dia. pickets @ 5" o.c. with 4" dia. rail on stairways & 2nd floor balconies
ROOF SYSTEM:	2x roof rafters with 1/2" OSB roof sheathing (or 5/8" OSB where required by code).
PORCH ROOF SYSTEM:	2x roof rafters with 1/2" OSB roof sheathing (or 5/8" OSB where required by code).
FASCIA:	2x S1S2E spruce or pine with 1x4 shingle molding.
ROOFING:	30 yr. Architectural fiberglass shingles over 15 lb. roofing felt.
BASIC BUILDING HARDWARE:	Joist hangers, hurricane ties, roof straps, log wall bolts & construction adhesive between each course of logs.
CONSTRUCTION MANUAL:	A simple step by step "how-to" guide.
BLUEPRINTS:	Five complete sets of permit ready plans prepared by registered architects.

LOG FINISH MATERIALS:	"Sashco" products: Log Jam chinking for interior & exterior joints/seams. Capture exterior stain and Cascade exterior clear coat. Symphony (2 coats) interior clear coat finish.
TECHNICAL ASSISTANCE:	A Contemporary Log Home representative will assist the construction crew at the construction site in starting log walls from the first floor.
FREIGHT:	Included to the construction site if the materials are paid for prior to shipping in the AZ, CO, UT areas. Additional freight costs will apply for all other areas.

MANY POPULAR OPTIONS ARE AVAILABLE:

6x8 D-shaped logs	Pre-fitted Natural Hand Hewn Logs
8", 9", 10" & 12" diameter logs	Hand Peeled Machine Logs
Metal Roofing	Log Stairs
Window Packages	Door Packages
Heavy Timber Structures	Custom Design by Registered Architects

Thanks for taking the time to consider us as part of your dream. Call one of our representatives today or anytime. We don't have a clock when it comes to customer service!



Western Region
4542 East McKellips Road
Suite 101
Mesa, AZ 85215
(480) 894-1715

Eastern Region
25950 Hayden Lane
Edinboro, PA 16412
(814) 734-8716

Visit us on the web at www.clhllc.com
Email: deliverdreams@clhllc.com